



Déclaration de Conformité / Declaration of Conformity / Konformitätserklärung / Conformiteitsverklaring

Nous, We, Wir, Wij,

**LUCIDE N.V.**

**Bisschoppenhoflaan 145, 2100 Deurne, Belgium**

déclarons sous notre propre responsabilité que les articles de luminaires listés ci-dessous:

declare under our responsibility that the luminaires listed below:

erklären, unter unserer Verantwortung, dass die unten gelisteten Leuchten:

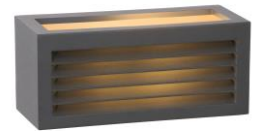
verklaren onder eigen verantwoordelijkheid dat de onderstaande armaturen:

27853/01/30

DIMO Wall light Outd.-Anthra.-1xE27-18W-IP54

CLASS 1, IP54

BARCODE: 5411212270863



L'article a été créé | The article was created | Der Artikel wurde erstellt | Het artikel werd gecreëerd: 02/10/2012

sont conformes aux directives et aux normes harmonisées de l'Union Européenne ci-dessous:

comply with the guidelines and the harmonized safety regulations of the European Union:

den Richtlinien und den harmonisierten Sicherheitsnormen der Europäischen Union entsprechen:

voldoen aan de richtlijnen en de geharmoniseerde normen van de Europese Unie:

**Low Voltage Directive 2014/35/EU :**

EN 60598-1:2015 + A1:2018;

EN 60598-2-1: 1989;

EN 62493:2020;

EN 60598-2-4:2018;

**RoHS Directive:**

RoHS 2011/65/EU & (EU)No.2015/863;



Déclaration de Conformité / Declaration of Conformity / Konformitätserklärung / Conformiteitsverklaring

**Reach Directive:**

Regulation 1907/2006;

The REACH conformity covers i.a. the registration duties according to article 7 REACH regulation and the compliance with the restrictions regarding the placing of hazardous substances, mixtures and articles on the market according to annex XVII REACH declaration. Furthermore, we provide you following information in accordance to article 33 REACH regulation regarding SVHC substances in the current version of the ECHA candidate list:

None of our products (including packaging), contains substances of the SVHC list with more than 0,1 wt.%.

Ward Mertens, CEO Lucide NV  
Antwerp, 02/10/2012



W. MERTEENS